



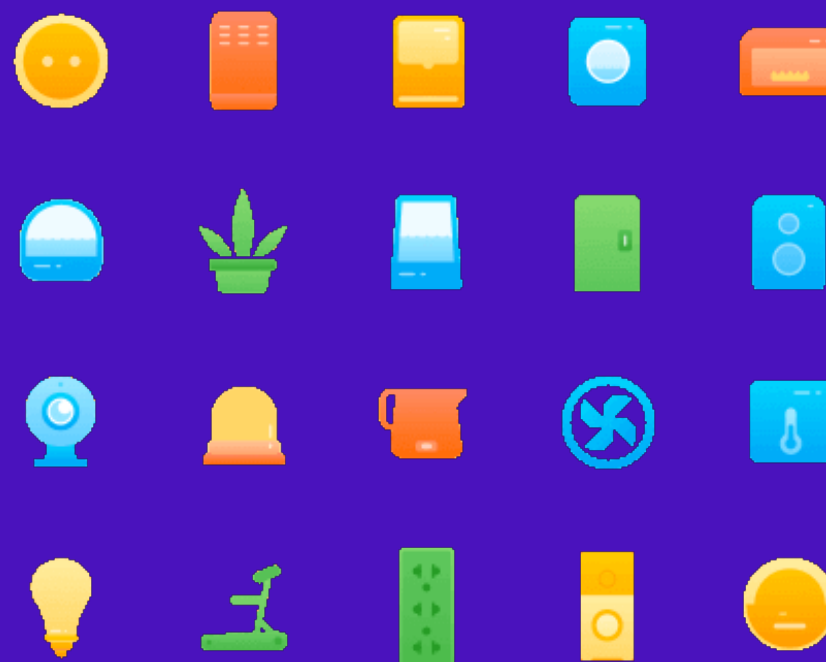
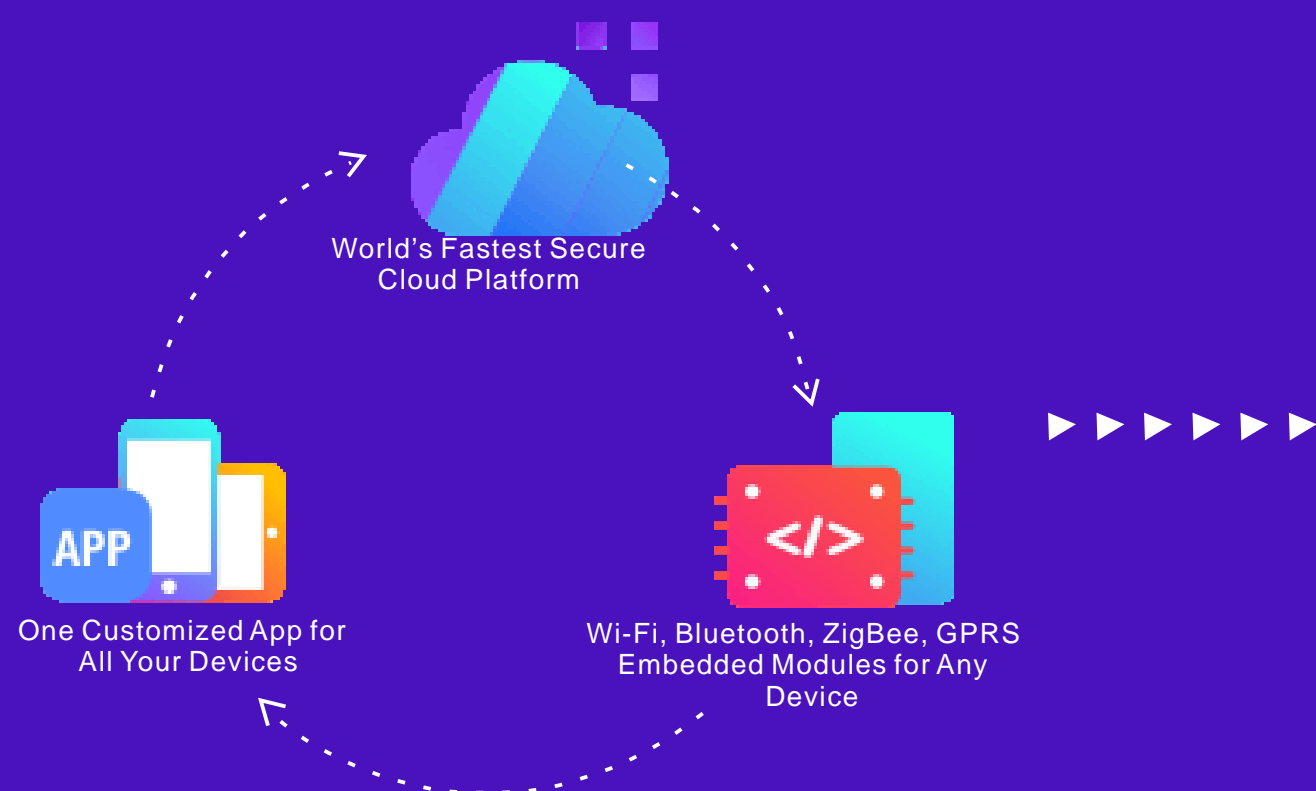
塗鴉智能



## Build Your IoT Future

Tuya helps consumer electronics brands retain and attract new customers by adding IoT control and connectivity to virtually any device. Our wireless modules integrate seamlessly into existing devices to instantly connect to the industry-leading Tuya cloud platform, with app development in as little as one day.

### Three Components of The Smart Home Market



Down Load App via following QR code



Or Search "Smart Life" in either App Store or Google Play to install the app

#### Smart Plug

Turn any plugged in device on or off, monitor energy consumption, and ensure electrical safety from anywhere

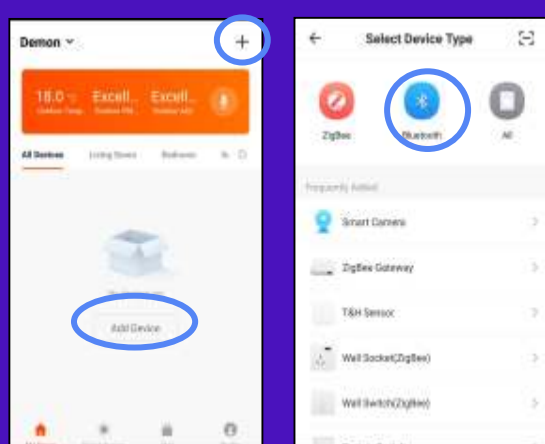


#### Wi-Fi Switch

App and voice command to switch and schedule indoor and outdoor lighting with timer and dimmer controls

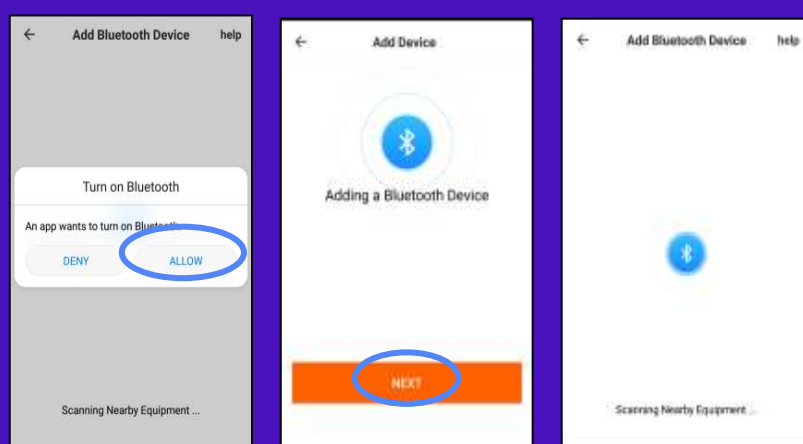


#### Start the APP



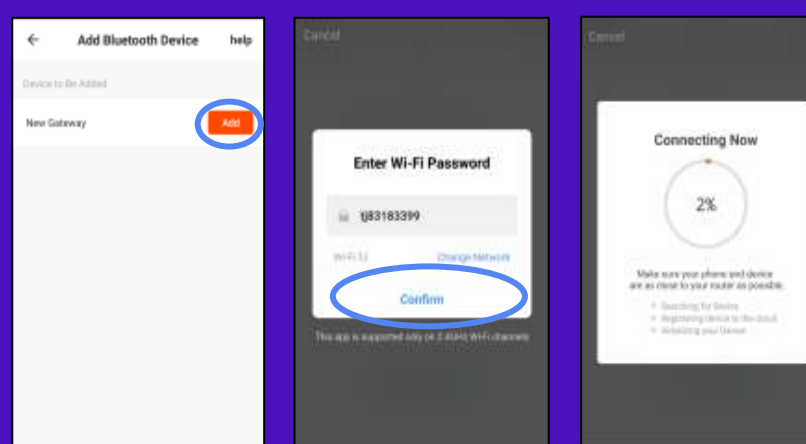
Keep pressing the button on the gateway, and release, the Indicator will blink  
Click "Add Device" at home page or the "+" sign to "All Devices" page  
Click "Bluetooth" option to next page

#### Add devices

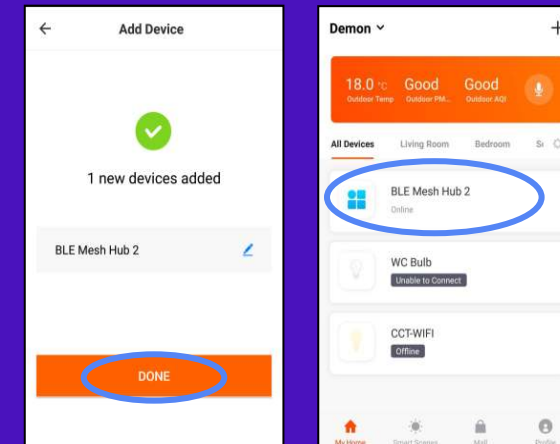


Turn on the Bluetooth of your phone  
Click "NEXT" to scan the devices  
Click "Confirm light slowly blink"

#### Connect Gateway to Network



Click "Add" to add new gateway  
Select the WIFI network and enter password, then click "Confirm"  
Then the gateway will connect to your WIFI network



Click "DONE", then the gateway will be added to the home page.  
Then you can control the Bluetooth devices via internet through the gateway